



<http://frenchprairiebridgeproject.org/about/history/>

Boones Ferry Park Master Plan

November 2018



WILSONVILLE
PARKS & RECREATION

Page 1 of 11

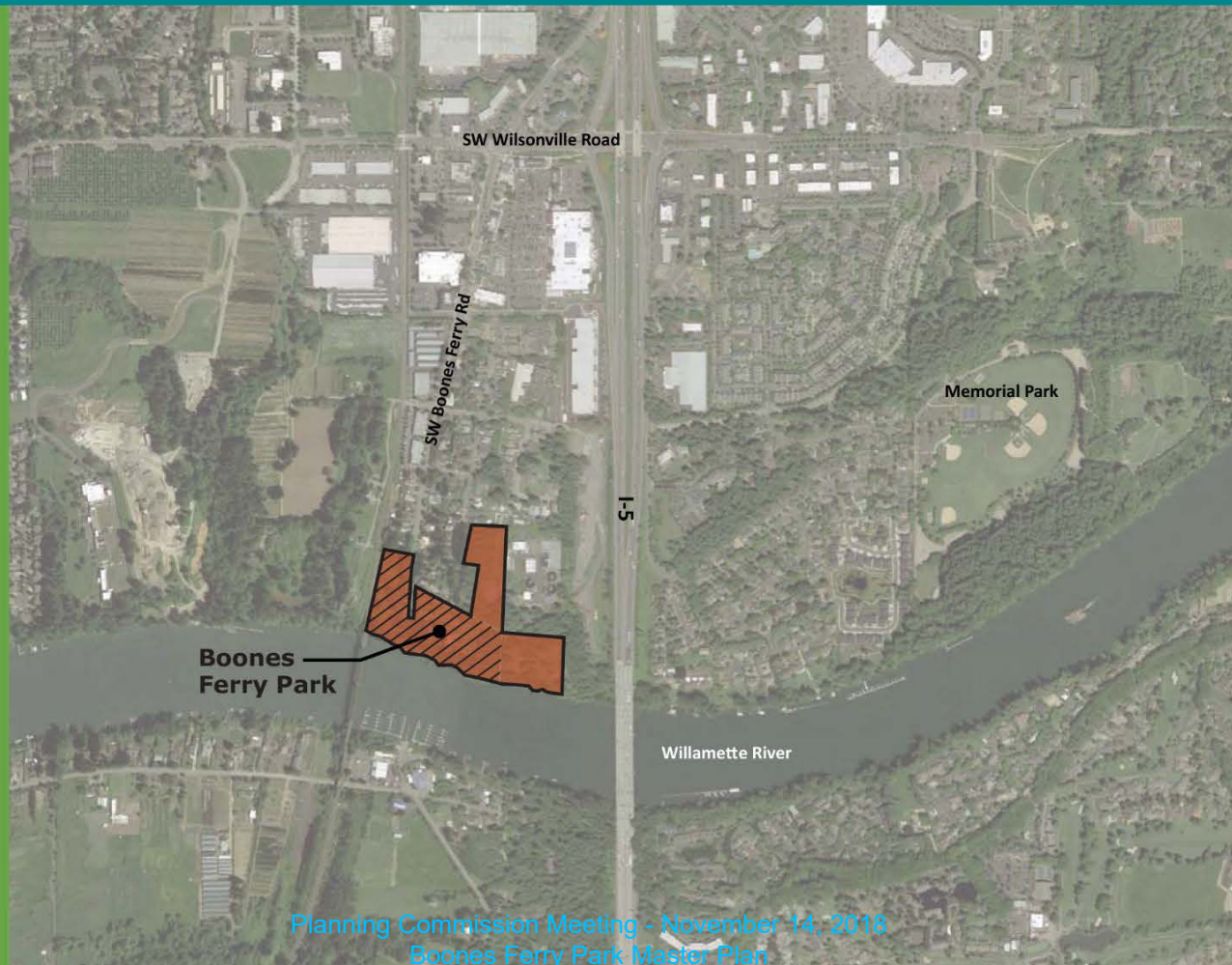
Planning Commission Meeting - November 14, 2018
Boones Ferry Park Master Plan




**DESIGN
CONCEPTS**

Community + Landscape Architects

BACKGROUND AND CONTEXT



Legend

-  Existing Boones Ferry Park
-  Master Planned Area





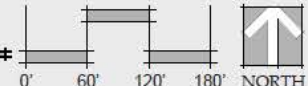
BOONES FERRY PARK - SITE ANALYSIS MAP

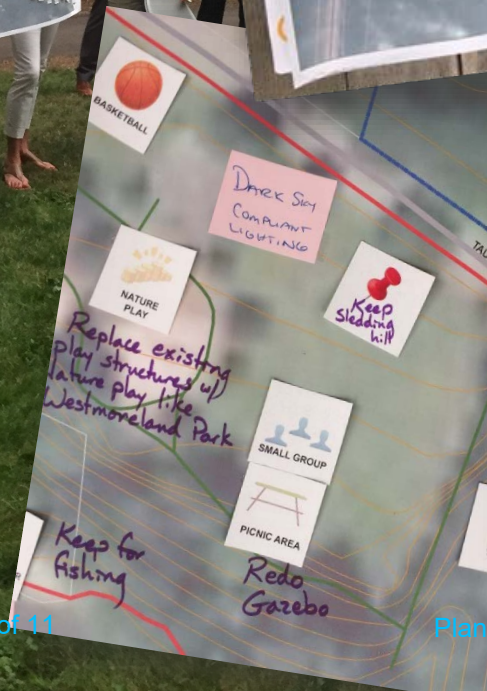
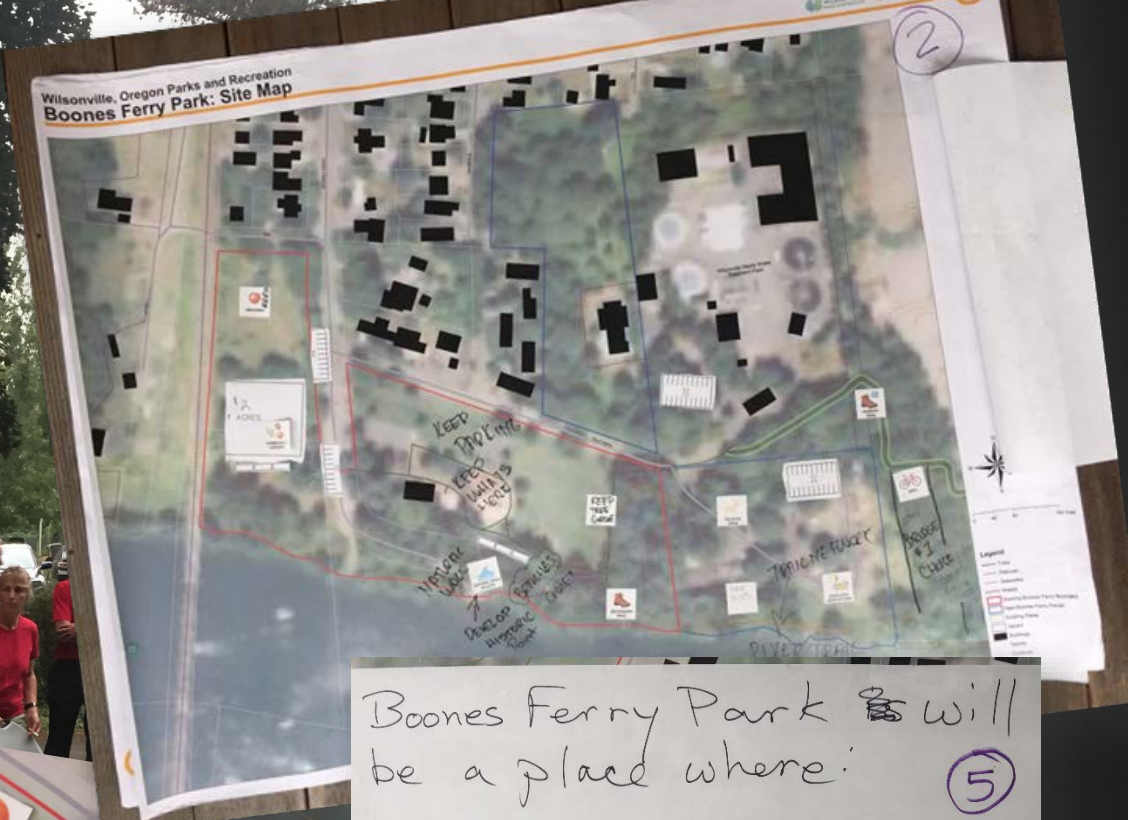
SEPTEMBER 2017

Page 2 of 11

Planning Commission Meeting - November 14, 2018

Boones Ferry Park Master Plan





Boones Ferry Park ~~is~~ will be a place where: ⑤

- Dogs can play
- There's abundant and easy access to the river
- I can launch a kayak or canoe
- there's a place to fish
- there's a good circuit of paths to walk for exercise; preferably in the shade
- community residents can hold family picnics

Public Outreach

3 Public Workshops

211

Online Survey
Comments

Neighborhood
Mailings

Facebook Events

Email Notifications

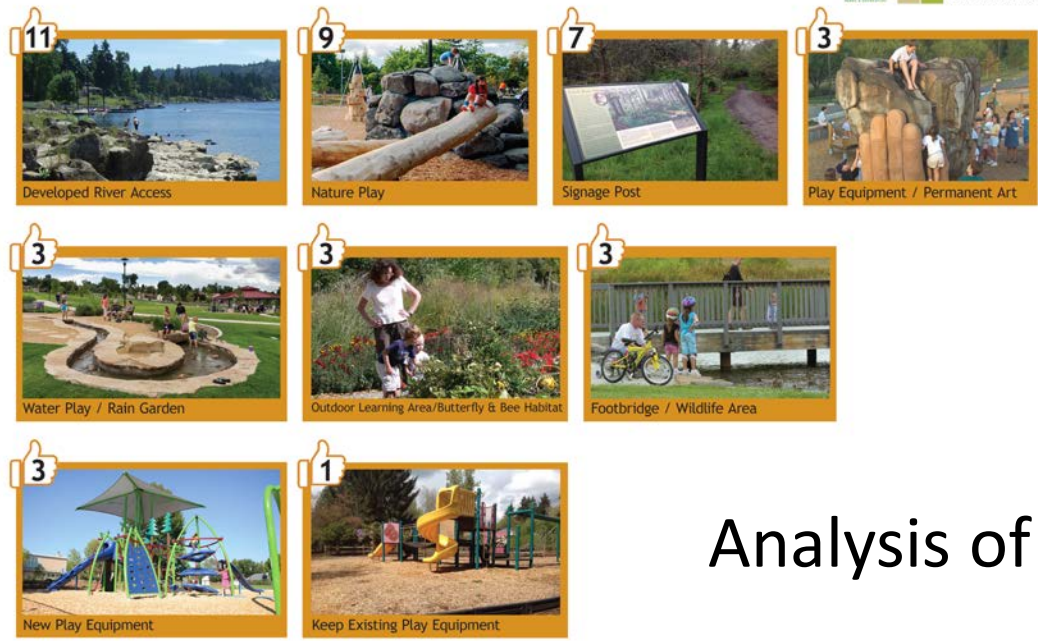
Boones Ferry Park Workshop Features Analysis

	Group Plan Number				
	1	2	3	4	5
Features on all Group Plans					
Natural River Access					
Keep North Area Natural					
Minimal Development at North Area					
Features on all but one Group Plans					
Basketball					
Fishing					
Shelter					
Picnic					
Community Garden					
Developed River Access					
Restroom					
River Trail					
Bike					
Wildlife					
Keep Wooded Area					
Features on 2 of 4 Group Plans					
Play Equipment					
Dog Park					
Water Equipment					
Keep Existing Parking					
New Parking					
Benches/Seating					
Primary Trail					
Secondary Trail					
Butterfly & Bee Habitat					
Nature Play					
Bridge					
Arboretum					
Site Lighting					
Bicycle Pump Track					
Features on only one Group Plan					
Keep Sledding Hill					
Rain Garden					
Garbage Cans					
Adult Fitness					
Outdoor Learning					
Orchard					
Mini Amphitheater					
Floating Dock w/ Swimming					
Historic Ferry Crossing					
Drinking Water					
Signage Post					
Horseshoes					
Public Mural Art					
Permanent Art					
Song Circle					
Total features shown:	21	22	26	18	
Feature on only Individual Plan					
Open Gass/Multi-use Play area					
Total features shown:					15

Page 3 of 11

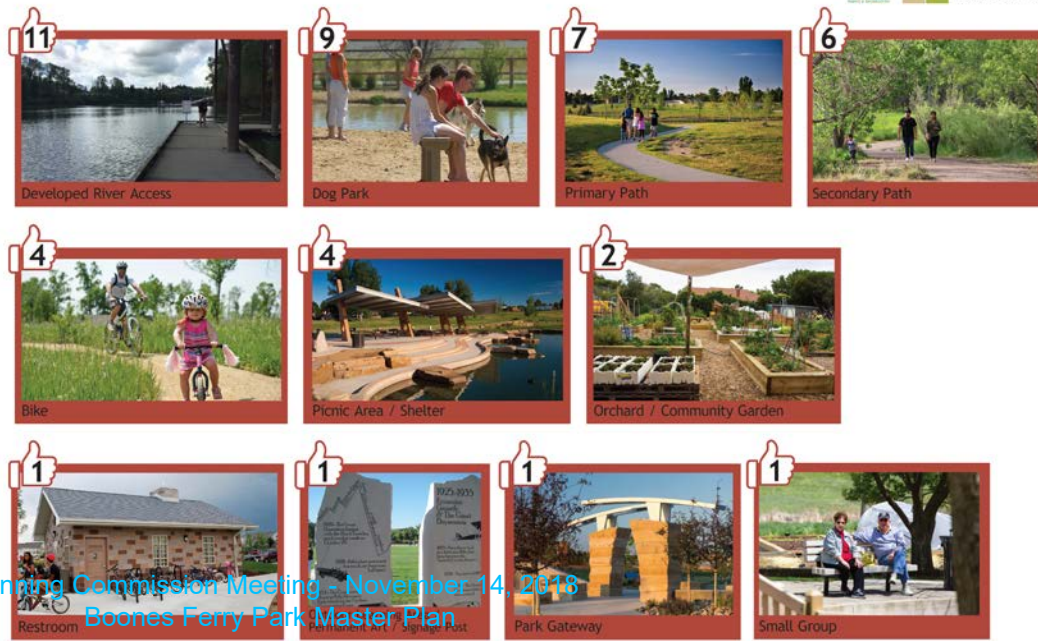
Note: Plan #5 was generated by a single participant thus is not a group plan

Outdoor Play & Learning



Analysis of Public Input

Services



CONCEPT PLAN

Concept Plan #1 - Engage the River

- Activate river edge through overlooks, water access
- 5 overlooks provide views to river
- 2 docks provide direct river access
- Water equipment rental area
- Preserve existing services near the Tauchman House
- Extend event/program spaces from historical Tauchman house
- Improve street parking and cross walking at SW Tauchman St
- Extend play area into wooded area and integrate variety of spaces for families
- Create recreational destinations and river overlook along the riverside



Image C: Concept Plan #1

CONCEPT PLAN

Concept Plan #2 - Historical Focus

- Enhance the historical character of the Tauchman House
- Emphasize view to the house at park entry
- Event lawn and arboretum
- Relocate existing services near the Tauchman House
- Large open lawn for multi-purpose activities
- Restrict street parking and drop-off area along main access
- Develop east side and wooded area with diverse activities (bike pump track, basketball and nature play)
- Preserve north wooded area



Image C: Concept Plan #3

CONCEPT PLAN

Concept Plan #3 - Activated Park

- Activated west site with diverse activities (bike pump track and dog park)
- Integrate variety of spaces for families through centralized activity area
- Extend the Tauchman House with new indoor event space and new restrooms
- Restrict street parking and drop-off area along main access and SW Tauchman St
- Minimal elements in the preserved wooded area to north
- Develop river edge and create pedestrian/bikes network along riverside



BOONES FERRY PARK CONCEPT 3 - ACTIVATED PARK OCTOBER 2017

From everything you saw on any of the three plans, what should definitely be on the final plan?

- River access/docks/water rental
- Dog Park
- Pump Track
- Water play creek
- Trail through wooded area connecting to Magnolia Ave
- Butterfly/bee garden
- Preservation of big trees
- Small covered play area for use in winter

What do you like about Concept 1: Engage the River?

- River access overall & water equipment rental

What do you not like about Concept 1: Engage the River?

- Parking near NW corner
- Nature play in preserve wooded area
- Dog park location - needs to move to new area of park
- Community garden - not needed



Three conceptual plans to one conceptual plan that was refined to ...



Plan Highlights

Dock w non-motorized watercraft launch and rental opportunities

River Overlooks

Trails and preserved wooded areas

Dog Park and Bike Skills Course

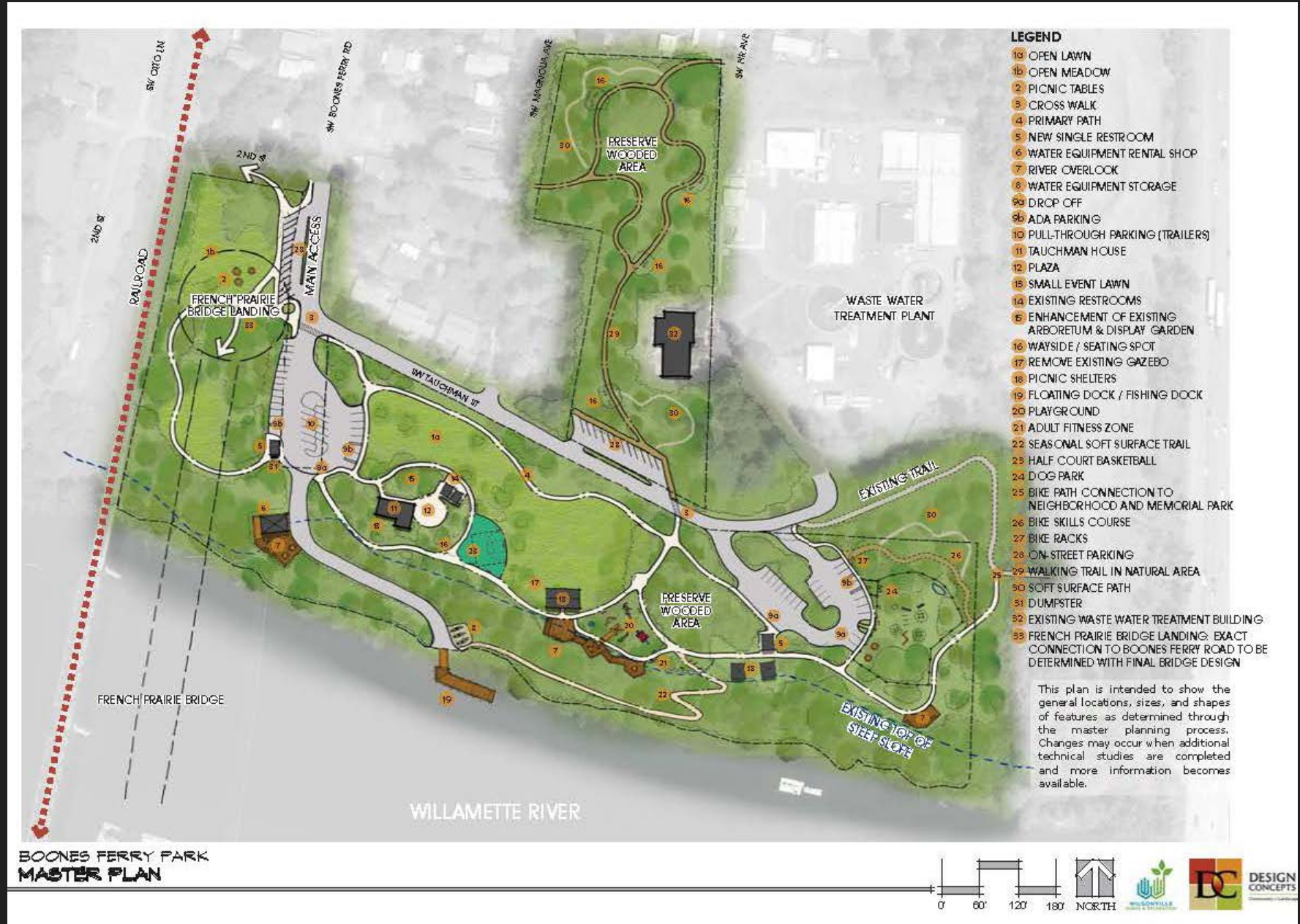
Updated Tauchman House with added outdoor event space

Playground and Basketball Court

Connections to existing and planned trail systems

French Prairie Bridge Landing

Additional parking, restrooms and picnic shelters





Themed Playground

Overlooks

Walkway

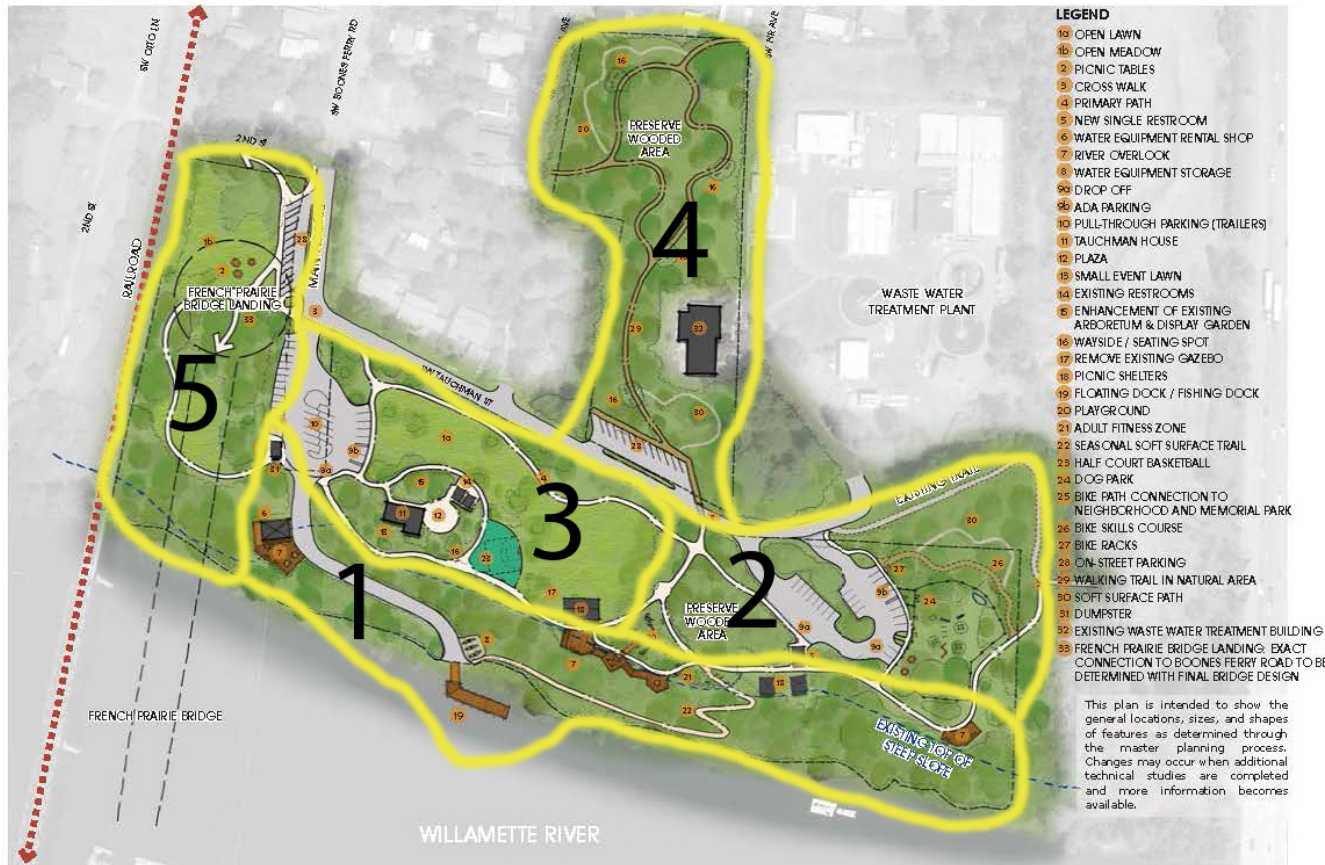
Vista Pruning of Vegetation

Boating / Fishing Docks



Phasing Plan:

Proposed Plan

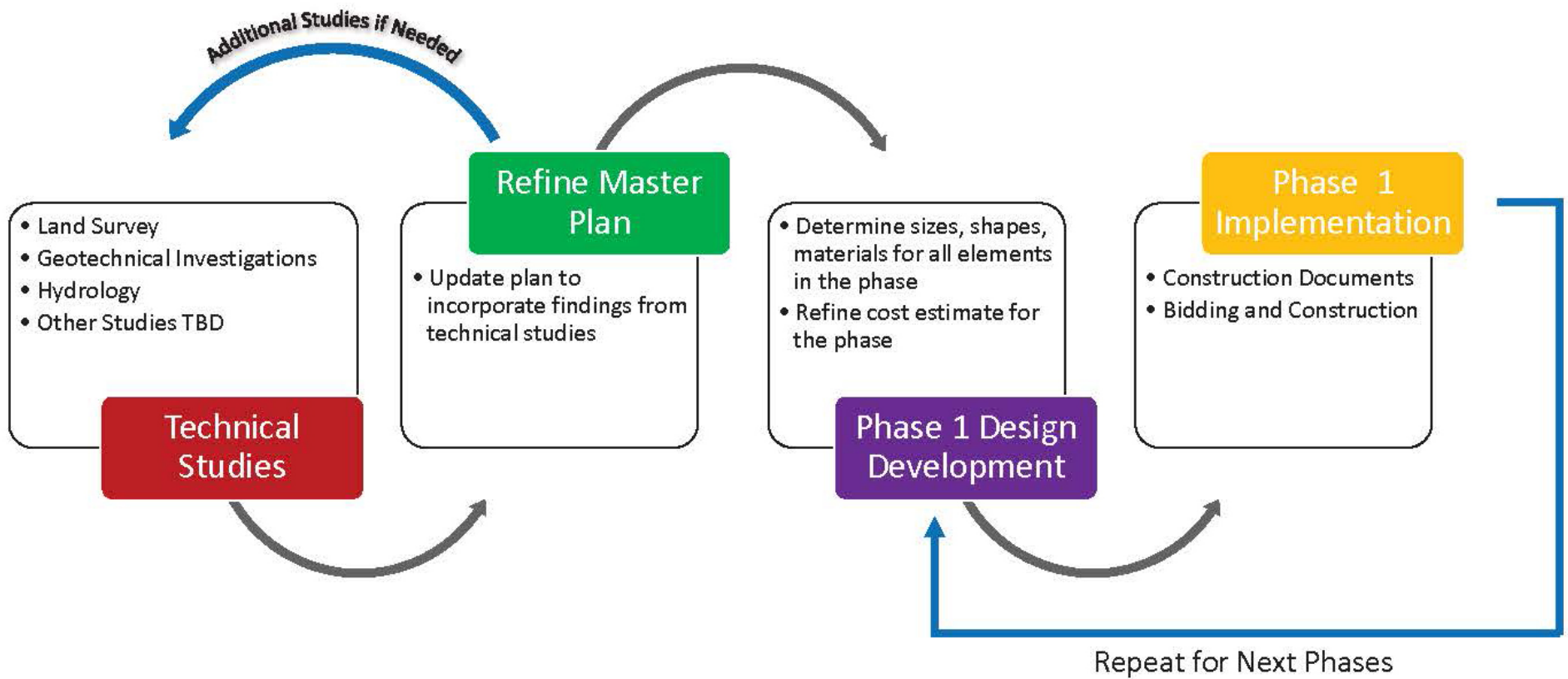


Cost Estimates for All Phases	
Phase 1	\$2,775,630
Phase 2	\$2,330,625
Phase 3	\$4,272,895
Phase 4	\$325,875
Phase 5	\$1,001,880
Total of All Phases	\$10,706,905

BOONES FERRY PARK
MASTER PLAN



Next Steps:





Thank You!

