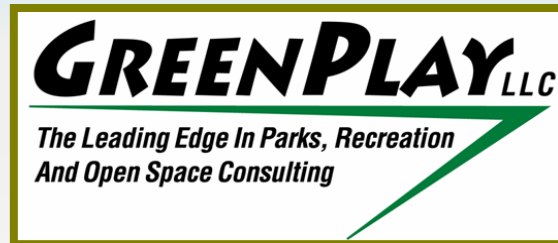




**Comprehensive Parks and Recreation Master Plan  
Planning Commission Hearing  
August 8, 2018**



# Agenda

- ❑ Master Planning Process
- ❑ Key Findings
- ❑ Planning Commission and City Council feedback



# Purpose of this plan

- Update 2007 Parks and Recreation Master Plan
- Follow City of Wilsonville 2013 Comprehensive Plan principles
- Provide a vision for future parks, recreation, open space and trails
- Serve as an action plan for providing a high level of service
- Address park development, recreation services, trails, open space & natural resource preservation, current deficiencies, and the need for future facilities

# Master Planning components

- **1. Information Gathering & Analysis**
  - Review background data
  - Stakeholder Focus Groups
  - Community Survey
  - Inventory Update & Gap Analysis
  - Organizational and Program Review
  - Analyze and Coalesce Data
- **2. Findings & Visioning**
- **3. Goals & Recommendations**
- **4. Draft and Final Plans**



## Key findings

- Appreciation of existing parks, programs, and services
- Parks highly valued by residents
- Desire for river access
- Trail connectivity priority for residents
- Need to add synthetic turf fields
- Concern for lack of indoor recreation and aquatic facilities
- Quality and maintenance of facilities and amenities important to residents
- Protect/preserve natural areas and environment high priority
- Safety and security high priority
- Desire to increase special/cultural events



# Parks and Recreation Mission

“Recognizing community history, enriching the quality of life and fostering a safe environment, the Wilsonville Parks and Recreation Department shall provide, preserve, maintain, improve and enhance recreational opportunities, social services, natural resources and parkland for current and future generations.”

# Planning Commission Recommendations

- ❑ Integrated Pest Management Plan
- ❑ Natural Resources
- ❑ Synthetic Turf
- ❑ Public Art
- ❑ Future Development



# Integrated Pest Management (IPM) Plan

- Objective 3.9 (p 132) – The Department should work with other City Departments for creation and implementation of a City-wide IPM Plan
  - Action 3.9a – Select optimal integrated pest management strategies that balance social, environmental and economic factors. The goals for selecting treatment principles and developing pest management strategies include:
    - Preservation of natural system, including pollinator habitat
    - Emphasize practices to minimize risk to human health
    - Reduce and eliminate, where possible, chemical pest control treatments
    - Ensure cost-effectiveness in the short and long term
    - Evaluate the efficacy of the integrated pest management



# Natural Resources

- Objective 3.10 (p 133) – Maintain and Improve Wilsonville’s Natural Areas, including Tree City and Bee City USA designations.
  - Action 3.10a – Provide appropriate care of natural resources paying attention to bio diversity, pesticide management and eco-friendly practices while following the City’s IPM Plan.
  - Action 3.10b – Tree City and Bee City
  - Action 3.10c – Creation and implementation of Urban Forestry Management Plan

# Synthetic Turf

- Objective 1.8 (p 127) – The Department should consider development of synthetic turf fields in an effort to meet the demand of the community for year-round play. Staff should explore synthetic surfaces that best meet the needs of the community.
  - Action 1.8a – Develop priorities for installation of synthetic turf fields analyzing financial projections for construction and replacement, O&M budget projections, safety and environmental concerns and a pro-forma for operations.

# Public Art

- Action 1.6C (p 125) – “Explore opportunities to feature public art at various park locations.”

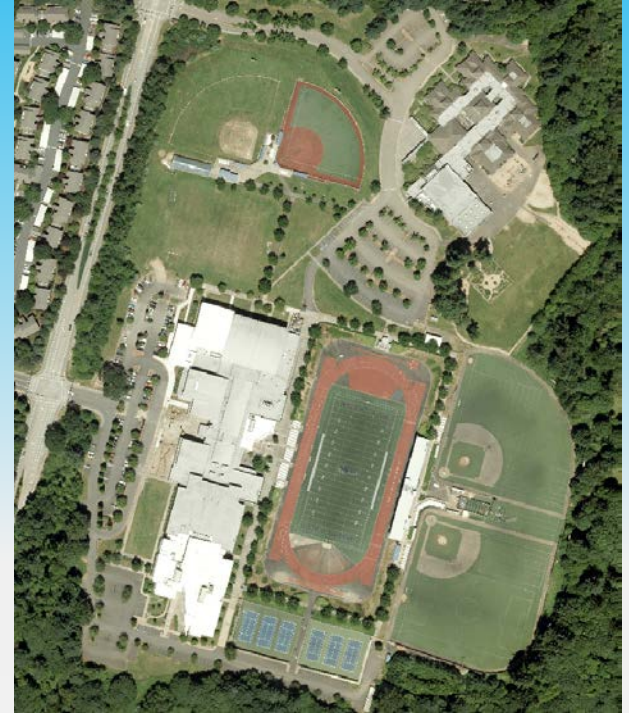


# Future Development

- Action 1.7h h (p 127) – Future Development
  - Design and construction of parks and recreation facilities as part of future Basalt Creek Planning area
  - Ensure adequate parks and recreation facilities are provided in all future planning areas, including areas added to the UGB and annexed into the City.
  - Work closely with City departments and private developers to make sure the parks and recreational needs of the community are being met
  - Work with Oregon Parks and Recreation for public access to, and development of 15 acre Willamette Meridian Landing site

# City Council Recommendations

- ❑ School District facility list
  - ❑ (p 50; Appendix D)
- ❑ Joint Use Agreement with WLWV School District
  - ❑ Objective 3.5 (p 131)
- ❑ Addition of synthetic turf sport fields
  - ❑ Objective 1.8 (p 127)





**Thank You**