

2024 May Report Transit/Fleet

President William Howard Taft once wrote – “Don’t write so that you can be understood, write so that you can’t be misunderstood.” Well, here is my attempt at not being misunderstood.

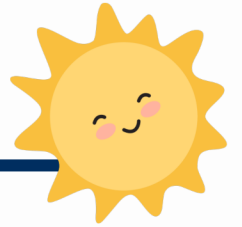
The love I have is for everyone. The trust I have is for few. I believe the truth is never gray and a white lie is a lie nonetheless. I wear a suit, a hat, and polish my shoes so that no one will mistake me for someone who doesn’t care about their appearance. I wash my car often and for the same reason. I fight hard for right, especially in the face of wrong. I believe there is good in everyone but I believe some choose to bury it deep beneath the bad they do. I endeavor to live a life free of apology and regret. I don’t seek to offend anyone but it does happen. I believe I am loved by some and not by others. I believe this happens organically when one chooses truth over expediency.

Finally, and most importantly, I am my own person, and the drumbeat that I march to is a rhythmic pattern heard by only me.

Dwight Brashear
Transit Director

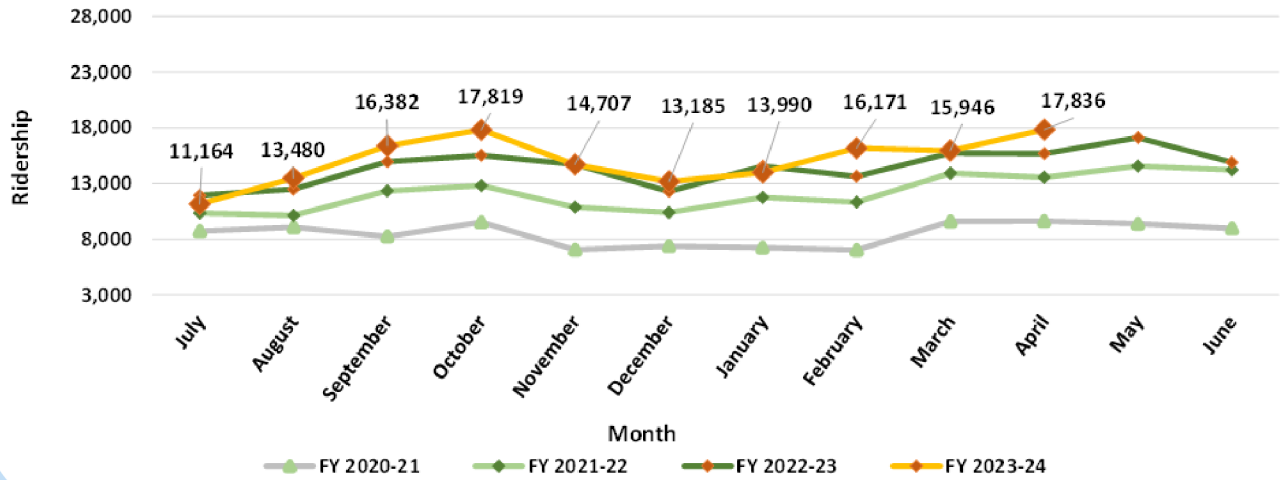


RIDERSHIP TRENDS

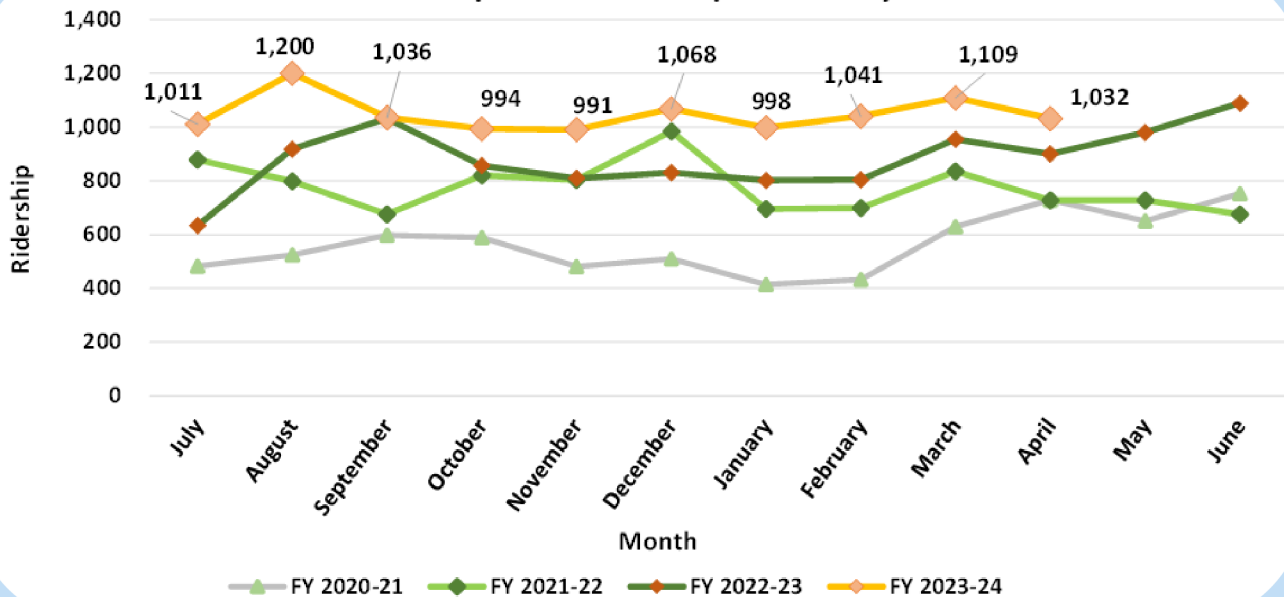


Anne MacCracken

Fixed Route Ridership Trends by Month



Demand Response Ridership Trends by Month



FLEET SERVICES

Scott Simonton

Work is underway for the installation of two new Electric Vehicle chargers at City Hall. The two chargers will be accessible to both Fleet vehicles and the general public.

Existing underground electrical, remaining from the original chargers (installed in 2010) will be reused, making this a relatively simple installation. We anticipate the chargers to be available for use in the month of June.

OPERATIONS

Brad Dillingham

You may have noticed something new riding along the side of our buses---"Ride Clackamas" decals.

RideClackamas.org is a one-stop website designed to help travelers easily navigate and plan rides all across Clackamas County. Clackamas County is home to six small transit agencies that serve the area: Canby Area Transit, Clackamas County, Mt. Hood Express, Sandy Area Metro, South Clackamas Transportation District, and SMART. The services provided by these agencies span from Mt. Hood all the way down to Salem.

The website has several features, such as an interactive map, an alert feature, and a trip planner, and it is simple to use on both desktop and mobile devices.

The trip planner allows passengers to input their starting point, destination, and preferred time of arrival and departure. Based on this data, the planner determines which bus best fits the passenger's schedule. It makes shifting across jurisdictions easy and accounts for the numerous agencies that offer services. Passengers can view all of the routes, their schedules, the name of the agency offering the service, and the real-time location of the bus on the interactive map.

Give it a try at [RideClackamas.org](https://rideclackamas.org).



COMMUTE OPTIONS

Michelle Marston

Multiple worksites are participating in commute challenges this month including City of Wilsonville employees.

The goal of these challenges is to encourage those who drive alone to explore alternate commute methods.

As folks sign up to participate this creates a database of contacts who may be interested in forming a carpool or vanpool to work. Users can then connect via the getthereOregon.org website.

SUMMER COMMUTE CHALLENGE
 • HOW TO GET STARTED •
GETTHEREOREGON.ORG/COW

- 1 REGISTER TO JOIN & create account or LOGIN TO JOIN if you have an existing account with Get There Oregon.
- 2 Log transit, bike, walk, carpool or vanpool trips by filling in the details. 5/20-6/28
- 3 When you reach 30 points redeem for electronic gift card.

WILSONVILLE SMART SOUTH METRO AREA REGIONAL TRANSIT get there

GRANTS & PROGRAMS

Kelsey Lewis

May is Bike Month, and is often the time people start thinking about bike commuting. Since last year we have been working on a project to give our passengers a more convenient option for securing bicycles at the Wilsonville Transit Center. This project retired half of our old lockers and we are partnering with Bikelink to offer on-demand bike lockers.

Now cyclists can rent a locker whenever they need one with a Bikelink card, or using the Bikelink smartphone app. These modern bike lockers provide a way to take spur of the moment bike trips, for commute or otherwise, and avoid driving. From a tourism perspective, these lockers literally put Wilsonville “on the map,” joining the Bikelink network of bike locker locations all along the West Coast.

BIKE PARKING

SIGN UP WITH BIKELINK
 Get app access now. Order card if you don't have a smartphone.

App: Card: bikelink.org 888.540.0546

General: 5 e / hour
 (10:00 a.m. - 8:00 p.m.)
 8 e / hour
 *15k / hr after 8:00 p.m. expires.

24/7 Support
 (888) 540-0546
support@bikelink.org

OK to Park:

Card: Park or retrieve: 1. Hold card to reader. 2. Enter PIN at locker.

Only functioning, human and electric-powered vehicles and related equipment (e.g. trailers and cargo racks) may be parked. Non-powered vehicles, non-operational vehicles, boats and general storage are prohibited. Lockers are under surveillance and are monitored 24/7. Agreement violations, including use of lockers for prohibited purposes, may result in removal and may be prosecuted without further notice. Details at bikelink.org/termsandconditions.

bikelink.org SMART

SAFE ROUTES TO SCHOOL

Patty Tiburcio

In May, in addition to the Walking School Buses at Wilsonville's public primary schools, SMART staff supported Boones Ferry Primary and Meridian Creek Middle School with their May Walk+Roll to School events.

May 4 was National Bike+Roll to School Day. Wilsonville students were encouraged to Bike+Roll because SMART's bike fairies were visiting all Wilsonville schools on this day. SMART's bike fairies visited six schools and left 106 fairy bags on bikes and scooters.

SMART staff assisted Northwest Housing (NHA) staff with their Bike Repair/Bike Safety event at Autumn Park Apartments.

SMART staff held a weeklong after-school Learn-to-Ride Bike Clinic at Wilsonville Transit Center.

SMART and WashCo hosted their first Bike Repair class at Wilsonville Public Library.

SMART staff supported Lowrie Primary's Wheel-a-Thon by providing a Bike Repair mechanic and free helmets to those in need.

Fairy bag contents



Learn-to-Ride Bike Clinic



Bike Repair class



Boones Ferry Primary Walking School Bus

